

CrystalCeram® Gum Powders and CGI Gum Stain Pastes

Instructions for use

Manufactured by:

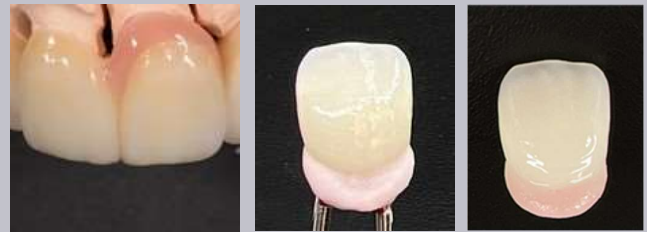
Ceragroup Industries
5600 NW 12TH Ave #304
Fort Lauderdale, FL 33309
1-954-670-0208
info@ceragroup.net



1. Product Description

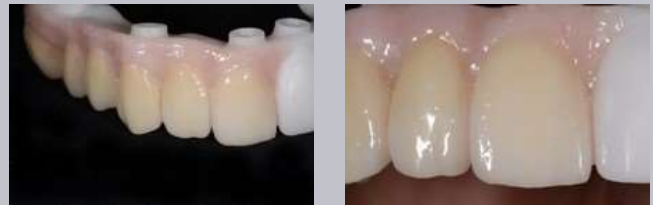
1.1 Gum Porcelain Powders

CrystalCeram® Gum Porcelain Powders are Intended to be applied over Zirconia materials to restore the tissue shape and create individual characterization of the gingival tissue area of the restoration. Gum powders are available in 5 shades (extra light, light, medium, red, and dark). These powders, in combination with CGI Gum Paste Stains, provide a more characterized appearance to the gingival area. They can also be used to recreate gum wherever it is needed.



1.2 CGI Gum Paste Stains

CGI Gum Paste Stains are to be used over gingival areas that already have a full gingival contour as well as to better characterize the CrystalCeram® Gum Porcelain Powders, if desired, to achieve a more individualized characterization of the gingival areas.



2. Indications For Use

The material is intended to be used on all zirconia restorations to reproduce the gum tissue.



3. Warnings

Do not use this material for purposes other than its intended use or in a manner different from the instructions stated in this procedure. Do not blend with any other non-recommended product. Do not inhale powder. Do not get dust, paste or liquid in contact with the eyes or skin. Protective equipment such as gloves, goggles, masks, and lab coats are recommended when using these materials. Refer to our SDS for more important information.

4. Technical Data

Table 1	
Coefficient of Thermal Expansion	10.0+/-0.5 X 10-6/°C
Transition Temperature	530°C +/- 20°C

5. Gum Porcelain Powder and Gum Paste Stain Application

Use CrystalCeram® Gum Porcelain Powder with CGI Modeling Liquid. Add a few drops of liquid to form the desired consistency. Wet a ceramic build-up brush with the Modeling Liquid and dry off excess with a tissue. Take the brush and collect the proper amount of gum ceramic and place where desired on the restoration. Place the restoration at furnace entrance and dry sufficiently prior to firing the restoration using the program provided in Table 1. You can add a second characterization if it is needed.

Starting zirconia restoration. The gum of the restoration can be stained with an infiltrated pink color before sintering for improving results. The gum powder and stains can be used even if the gum of the restoration was not infiltrated with the pink color.



Addition of Gum Porcelain Powder. Select the gum powder according to the prescription. Use the powder and liquid technique described above.



Complete all around the gum the addition of the Gum Porcelain. For a better characterization a darker or lighter gum shade or a blend of gum porcelain powders can be added.



Fire the restoration according to the firing table.
2. If it is necessary, add a second layer of gum porcelain to fit the gaps produced during the first firing. After the second firing the restoration can be shaped and contoured accordingly.



Addition of gum paste stains for improving characterization. Blackberry and/or Pomegranate paste stains, for example, can be used to intensify areas between the tooth roots and mucosa. Blush paste stain can be added over the marginal gingivae area.



Fire the gum paste stains using the firing table #3. The final restoration produced will be lifelike aesthetic. The tooth can be characterized using CGI stain colors and Fluorescent Glaze firing separated or at the same time of the gum stains.



6. Gum Porcelain Powders Color Chart Guide



7. Gum Paste Stain Color Chart Guide



Note: Actual color as true color based on RGB readings using a spectrophotometer. These guides are for visual reference and final shade is obtained after firing according to the firing chart.

8. Table 2. Recommended Firing Chart Gum Porcelain Powder Ceramic	
Dry Out	5 min
Insertion	350°C - 662°F
Heat Rate	40°C/min - 72°F/min
Firing Temperature Second Firing	825°C - 1517°F Reduce temperature 5-10°C
Hold Time	1 min
Vacuum	Yes

9. Table 3. Recommended Firing Chart Gum Paste Stain	
Dry Out	5 min
Insertion	515°C - 959°F
Heat Rate	55°C/min - 100°F/min
Firing Temperature	780°C - 1436°F
Hold Time	1 min
Vacuum	Yes

The information provided is a guide and the temperature should be adjusted depending on the furnace, tray and mass used.

10. Associated Products by CGI

- Gum Porcelain Powder Light, Extra Light, Medium, Red and Dark in 20g bottles.
- Stain Gum Kit :10 Gum Shades for characterizing and enhancing the tissue in 5g each.
- CGI Paste Stains are available in 15 shades.
- CGI Universal Glaze, CGI Universal Fluorescent Glaze, CrystalCeram® Fluorescent Glaze:
Available in Paste and Powder in 5gm jars

For more information visit www.cgiporcelain.com

